

Clarke®



LED WORKLIGHT MODEL NO: LED700SR

PART NO: 4003538

USER INSTRUCTIONS



UK
CA | CE

ORIGINAL INSTRUCTIONS

GC08/23

INTRODUCTION

Thank you for purchasing this CLARKE worklight.

Before attempting to use this product, please read this manual thoroughly and follow the instructions carefully. In doing so you will ensure the safety of yourself and that of others around you, and you can look forward to your purchase giving you long and satisfactory service.

TECHNICAL INFORMATION

Model	LED700SR
Operating voltages	3.7V (light), 230V (charger)
Rated input power	7W
LED replaceable	No
Rechargeable Lithium battery pack	3.7V / 6000 mAh
Lighting source	COB 6W
Light output (luminous flux)	150-700 Lumen (20-100%)
Colour temperature (rendering)	5500-6800K
Battery charging time	4-5 hours
Approximate run time	3-13 hours
Rated lamp lifetime	30,000 hours
Efficiency (Lm/W)	150
Ingress protection rating	IP67
Operating temperatures	-10 to +40°C
Dimensions (H x W x D) mm	Worklight - 45 x 200 x 63 Docking Station - 65 x 180 x 118
Weight	Worklight - 400g Docking Station - 260g

GUARANTEE





This product is guaranteed against faulty manufacture for a period of 12 months from the date of purchase. Please keep your receipt which will be required as proof of purchase. This guarantee is invalid if the product is found to have been abused or tampered with in any way, or not used for its intended purpose.

Faulty goods should be returned to their place of purchase, no product can be returned to us without prior permission. This guarantee does not effect your statutory rights.

SAFETY PRECAUTIONS

1. DO NOT shine the worklight into anyone's eyes.
2. Ensure the worklight is fully charged before initial use.
3. DO NOT use the worklight during recharging.
4. DO NOT use if you suspect that the battery or the casing is damaged.
5. Inspect the charger plug, cable & connector for damage to ensure items are safe before connecting to the power supply. If damaged DO NOT use.
6. Check that the input voltage marked on the charger plug is the same as the mains power supply to be used.
7. DO NOT disassemble the worklight for any reason.
8. DO NOT pull the charger from the mains socket by the lead.
9. DO NOT get the charger wet, or use in wet, damp conditions (the charger is for indoor use only).
10. Never use any charger other than the one supplied with this product when connecting to the power supply.

The following symbols may be displayed on the machine or its packaging.

	May interfere with pacemakers		Battery may be harmful to aquatic or other life
	Caution when disposing of inflammable battery		Danger-explosive battery materials

ENVIRONMENTAL RECYCLING POLICY



Through purchase of this product, the customer is taking on the obligation to deal with the WEEE in accordance with the WEEE regulations in relation to the treatment, recycling & recovery and environmentally sound disposal of the WEEE.

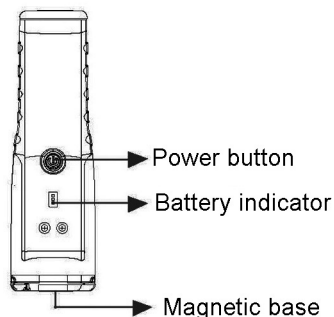
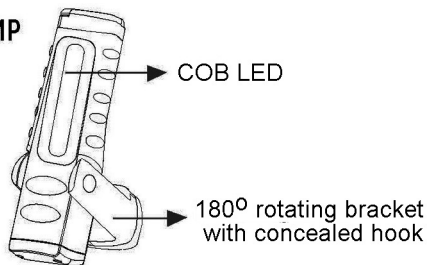
In effect, this means that this product must not be disposed of with general household waste but according to the laws governing Waste Electrical and Electronic Equipment (WEEE) at a recognised disposal facility.

The light source contained in this worklight has a life expectancy of approximately 30,000 hours after which the worklight should be disposed of in an environmentally responsible way.

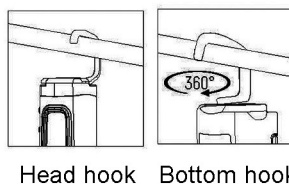
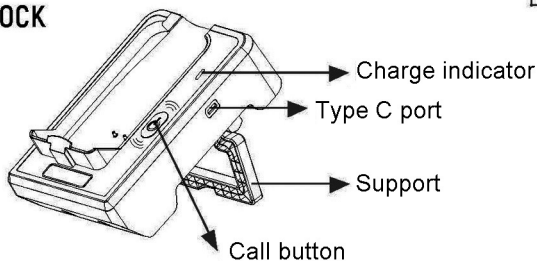
The Lithium Ion battery falls under the Waste Batteries and Accumulators Regulations 2009 and should be disposed of in a controlled manner.

FEATURES & OPERATION

LAMP



DOCK



BATTERY CHARGING

1. Plug the docking station charging cable into a 230V power socket.
 - The charge indicator turns red if charging the battery is desirable.

If the light is not being used for a long time keep it fully charged. Charging and discharging at intervals of max 3 months helps to maintain performance.

BATTERY INDICATOR

The battery level LED indicator is on back of the worklight: **Green = fully charged / yellow = 50% / red = low**

CHARGING INDICATOR

Charging status LED is displayed on the docking station: **Red = charging / Green = fully charged**

- The worklight should not be operated while using the charger.
2. If you plan to store the worklight (e.g. for emergencies), we recommend that the battery is fully charged before doing so. This will ensure the longest possible battery life.
 3. NEVER abuse the charger cable or yank the cable to disconnect it. Keep the cable away from sharp edges/hot surfaces.

SWITCHING ON AND OFF

1. Press the power button once to turn the main light ON.
2. Press the power button twice to turn the main light OFF.
3. Press and hold the power button while the main light is on to start dimming. To release, press and hold again to increase.
 - Lowest and highest levels are indicated by flashing of the light until the button is released.
 - When the lamp is turned off it will remember the main light setting.
4. Attach the worklight to a suitable support using either the folding or extending hook or attach to a ferrous metal surface using the magnet.

PAIRING

The light has been 'paired' to the docking station before leaving factory. Please pair or remove pairing as per the following steps if needed.

1. When 'pairing', press and hold the power button on the light until the red indicator lights up, then release.
2. Press the 'call' button on the dock station until the green indicator colour changed, the red indicator on the light starts to flash simultaneously and turns off.
3. To remove pairing, press and hold the power button on the light. The LED indicator will be red, flashing and off.

FIND MY LIGHT FUNCTION

When you want to find the light that has been misplaced, press the dock call button and release. You will hear beeps from the light and the light will flash.

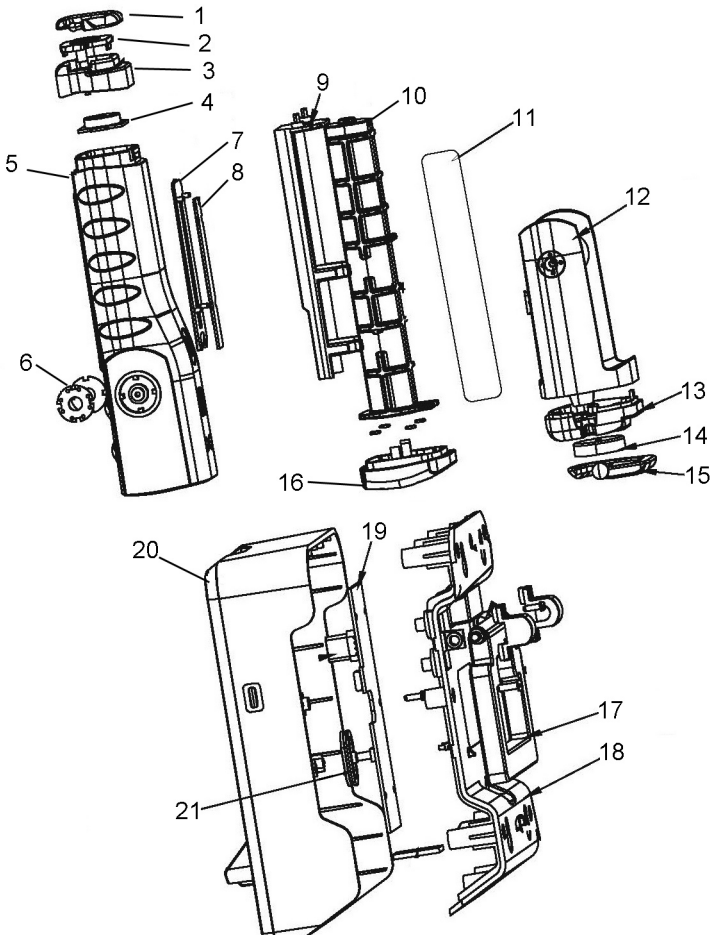
Press the power button on the light to turn the alarm off.

- The 'Find My Light' function will not work once the light has no power and may not work if the light is beyond 20 meters from the dock.

CARE & STORAGE

1. When not in use, switch off & unplug from the power supply. Store in a secure, dry place, out of the reach of children. DO NOT leave it exposed to the elements and avoid direct sunlight, direct heat, rain/moisture etc.
2. DO NOT use solvents, thinners or alcohol for cleaning, as these will damage the finish. With the worklight unplugged, use a dry cloth to wipe the parts.
3. The LED light source cannot be replaced but has a life expectancy of approximately 30,000 hours.
4. DO NOT attempt to repair this product or attempt any electrical repair yourself. Consult the Clarke Service Department on 020 8988 7400.

COMPONENT PARTS



Item	Description
1	Top Hook
2	Cover
3	Top Cap
4	Circuit Board
5	Moulded Shell
6	Angle Ratchet
7	Reflector

Item	Description
8	Lamp Panel
9	Heat Sink
10	Battery Sleeve
11	Lithium Battery
12	Bracket
13	Lower Cap
14	Magnetic Base

Item	Description
15	Hook
16	Bottom Cap
17	Docking Bracket
18	Back Shell
19	Docking Circuit
20	Front Shell
21	Switch

DECLARATIONS OF CONFORMITY



DECLARATION OF CONFORMITY
Fitwilliam Hall, Fitwilliam Place, Dublin 2

This is an important document and should be retained.

We hereby declare that this product(s) complies with the following legislation:

- 2006/66/EC Battery Directive
- 2014/30/EU Electromagnetic Compatibility Directive
- 2014/35/EU Low Voltage Directive
- 2011/65/EU Restriction of Hazardous Substances (RoHS) Directive

The following standards have been applied to the product(s):

- IEC 62321-3-1:2013, IEC 62321-4:2015+AMD1:2017, IEC 62321-5:2015, IEC 62321-7:2015,
- IEC 62321-8:2017, IEC 62321-9:2017, IEC 62321-10:2017, IEC 62321-11:2017, IEC 62321-12:2017, IEC 62321-13:2013, EN 61547:2009,
- EN 55032:2015+A11:2020+A1:2020, EN 55032:2017+A11:2020, EN IEC 61000-3-2:2019+A1:2021,
- EN 61000-3-3:2013+A1:2019+A2:2021, EN IEC 62368-1:2020+A11:2020

The technical documentation required to demonstrate that the product(s) meet(s) the requirements of the aforementioned legislation has been compiled and is available for inspection by the relevant enforcement authorities.

The CE mark was first applied in: 2023

Product Description: LED Worklight
 Model Number(s): LED700SR
 Serial/Batch Number: Refer to product/packaging label
 Date of Issue: 05/07/2023

Signed:

J.A. Clarke
Director



DECLARATION OF CONFORMITY
Hermal Street, Epping, Essex, CM16 4LG

DECLARATION OF CONFORMITY

This is an important document and should be retained.

We hereby declare that this product(s) complies with the following legislation:

- The Batteries and Accumulators (Placing on the Market) Regulations 2008
- The Electromagnetic Compatibility Regulations 2016
- The Electrical Equipment (Safety) Regulations 2016
- The Restriction of the Use of Certain Hazardous Substances in Electrical and Electronic Equipment Regulations, 2012

The following standards have been applied to the product(s):

- IEC 62321-3-1:2013, IEC 62321-4:2015+AMD1:2017, IEC 62321-5:2015, IEC 62321-7:2015,
- IEC 62321-8:2017, IEC 62321-9:2017, IEC 62321-10:2017, IEC 62321-11:2017, IEC 62321-12:2017, IEC 62321-13:2013, EN 61547:2009,
- BS EN 55032:2015+A11:2020+A1:2020, BS EN 55032:2017+A11:2020, BS EN IEC 61000-3-2:2019+A1:2021,
- BS EN 61000-3-3:2013+A1:2019+A2:2021, BS EN IEC 62368-1:2020+A11:2020

The technical documentation required to demonstrate that the product(s) meet(s) the requirements of the aforementioned legislation has been compiled and is available for inspection by the relevant enforcement authorities.

The UKCA mark was first applied in: 2023

Product Description: LED Worklight
 Model Number(s): LED700SR
 Serial/Batch Number: Refer to product/packaging label
 Date of Issue: 05/07/2023

Signed:

J.A. Clarke
Director

A SELECTION FROM THE VAST RANGE OF

Clarke®

QUALITY PRODUCTS



AIR COMPRESSORS

From DIY to industrial, Plus air tools, spray guns and accessories.

GENERATORS

Prime duty or emergency standby for business, home and leisure.

POWER WASHERS

Hot and cold, electric and engine driven - we have what you need

WELDERS

Mig, Arc, Tig and Spot. From DIY to auto/industrial.

METALWORKING

Drills, grinders and saws for DIY and professional use.

WOODWORKING

Saws, sanders, lathes, mortisers and dust extraction.

HYDRAULICS

Cranes, body repair kits, transmission jacks for all types of workshop use.

WATER PUMPS

Submersible, electric and engine driven for DIY, agriculture and industry.

POWER TOOLS

Angle grinders, cordless drill sets, saws and sanders.

STARTERS/CHARGERS

All sizes for car and commercial use.

PARTS & SERVICE: 0208 988 7400

Parts Enquiries
Parts@clarkeinternational.com

Servicing & Technical Enquiries
Service@clarkeinternational.com

SALES: UK 01992 565333 or Export 00 44 (0)1992 565335

Clarke INTERNATIONAL Hemnall Street, Epping, Essex CM16 4LG
www.clarkeinternational.com